

Steps to put on personal protective equipment (PPE) including coverall

- 1** Remove all personal items (jewelry, watches, cell phones, pens, etc.)



- 2** Put on **scrub suit** and rubber **boots**¹ in the changing room.

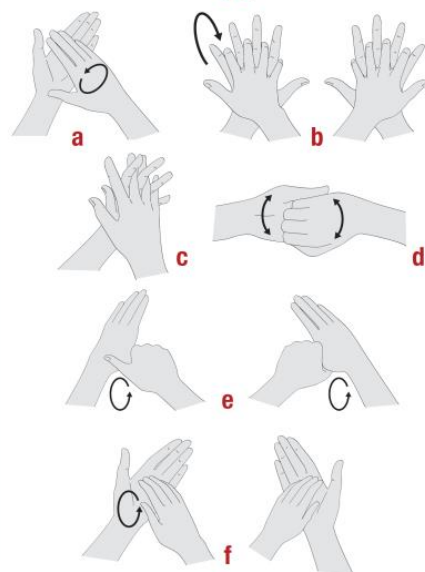


- 3** Move to the clean area at the entrance of the isolation unit.

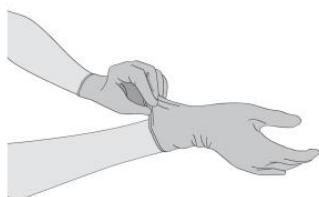
- 4** By visual inspection, ensure that all sizes of the PPE set are correct and the quality is appropriate.

- 5** Undertake the procedure of putting on PPE under the **guidance and supervision of a trained observer** (colleague).

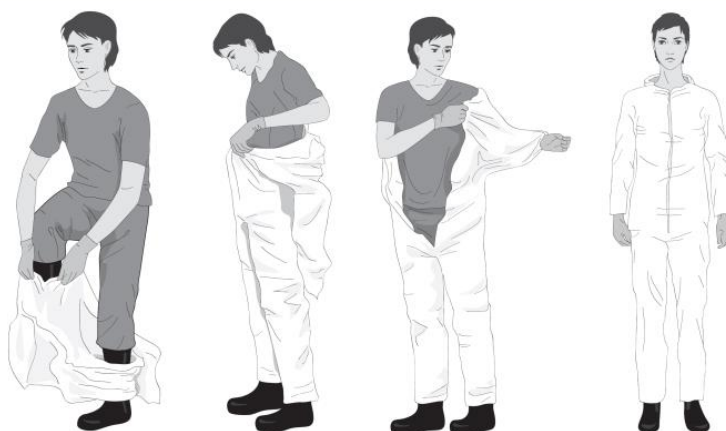
- 6** Perform **hand hygiene**.



- 7** Put on **gloves** (examination, nitrile gloves).



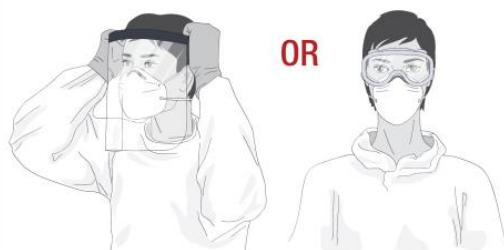
- 8** Put on **coverall**.²



- 9** Put on **face mask**.



- 10** Put on **face shield OR goggles**.



- 11** Put on **head and neck covering** surgical bonnet covering neck and sides of the head (preferable with face shield) **OR** hood.



- 12** Put on disposable **waterproof apron** (if not available, use heavy duty, reusable waterproof apron).



- 13** Put on second pair of (preferably long cuff)² **gloves** over the cuff.



¹ If boots are not available, use closed shoes (slip-ons without shoelaces and fully covering the dorsum of the foot and ankles) and shoe covers (nonslip and preferably impermeable)

² Do not use adhesive tape to attach the gloves. If the gloves or the coverall sleeves are not long enough, make a thumb (or middle finger) hole in the coverall sleeve to ensure that your forearm is not exposed when making wide movements. Some coverall models have finger loops attached to sleeves.

Steps to put on personal protective equipment (PPE) including gown

- 1** Remove all personal items (jewelry, watches, cell phones, pens, etc.)



- 2** Put on **scrub suit** and rubber **boots**¹ in the changing room.

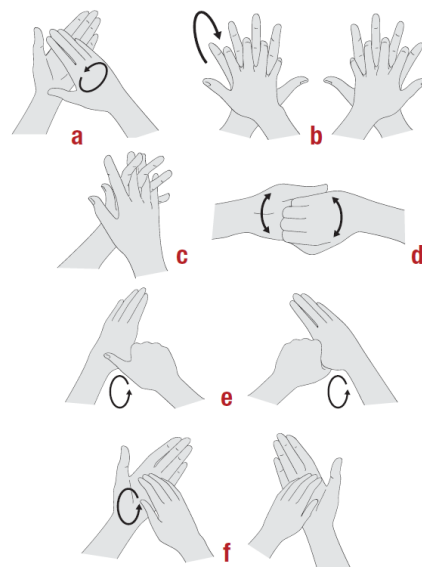


- 3** Move to the clean area at the entrance of the isolation unit.

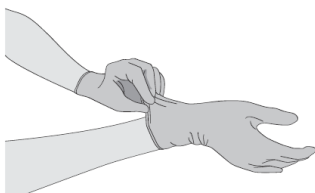
- 4** By visual inspection, ensure that all sizes of the PPE set are correct and the quality is appropriate.

- 5** Undertake the procedure of putting on PPE under the **guidance and supervision of a trained observer** (colleague).

- 6** Perform **hand hygiene**.



- 7** Put on **gloves** (examination, nitrile gloves).



- 8** Put on disposable **gown** made of fabric that is tested for resistance to penetration by blood or body fluids **OR** to blood-borne pathogens.



- 9** Put on **face mask**.



- 10** Put on **face shield OR goggles**.



OR



- 11** Put on **head and neck covering** surgical bonnet covering neck and sides of the head (preferable with face shield) **OR** hood.



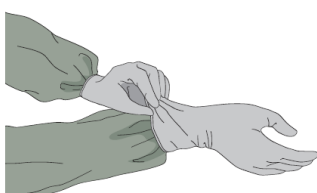
OR



- 12** Put on disposable **waterproof apron** (if not available, use heavy duty, reusable waterproof apron).



- 13** Put on second pair of (preferably long cuff) **gloves** over the cuff.



¹ If boots are not available, use closed shoes (slip-ons without shoelaces and fully covering the dorsum of the foot and ankles) and shoe covers (nonslip and preferably impermeable)

Steps to take off personal protective equipment (PPE) including gown

1 Always remove PPE under the **guidance and supervision of a trained observer** (colleague). Ensure that infectious waste containers are available in the doffing area for safe disposal of PPE. Separate containers should be available for reusable items.

2 Perform **hand hygiene** on gloved hands.¹

3 Remove **apron** leaning forward and taking care to avoid contaminating your hands. When removing disposable apron, tear it off at the neck and roll it down without touching the front area. Then untie the back and roll the apron forward.



4 Perform **hand hygiene** on gloved hands.

5 Remove **outer pair of gloves** and dispose of them safely.

Use the technique shown in Step 17

6 Perform **hand hygiene** on gloved hands.

7 Remove **head and neck covering** taking care to avoid contaminating your face by starting from the bottom of the hood in the back and rolling from back to front and from inside to outside, and dispose of it safely.



OR



9 Remove the **gown** by untying the knot first, then pulling from back to front rolling it from inside to outside and dispose of it safely.



8 Perform **hand hygiene** on gloved hands.

10 Perform **hand hygiene** on gloved hands.

11 Remove **eye protection** by pulling the string from behind the head and dispose of it safely.



OR



13 Remove the **mask** from behind the head by first untying the bottom string above the head and leaving it hanging in front; and then the top string next from behind head and dispose of it safely.



14 Perform **hand hygiene** on gloved hands.

12 Perform **hand hygiene** on gloved hands.

15 Remove **rubber boots** without touching them (or overshoes if wearing shoes). If the same boots are to be used outside of the high-risk zone, keep them on but clean and decontaminate appropriately before leaving the doffing area.²

16 Perform **hand hygiene** on gloved hands.

17 Remove **gloves** carefully with appropriate technique and dispose of them safely.



18 Perform **hand hygiene**.

¹ While working in the patient care area, outer gloves should be changed between patients and prior to exiting (change after seeing the last patient)

² Appropriate decontamination of boots includes stepping into a footbath with 0.5% chlorine solution (and removing dirt with toilet brush if heavily soiled with mud and/or organic materials) and then wiping all sides with 0.5% chlorine solution. At least once a day boots should be disinfected by soaking in a 0.5% chlorine solution for 30 min, then rinsed and dried.



World Health Organization

Steps to take off personal protective equipment (PPE) including coverall

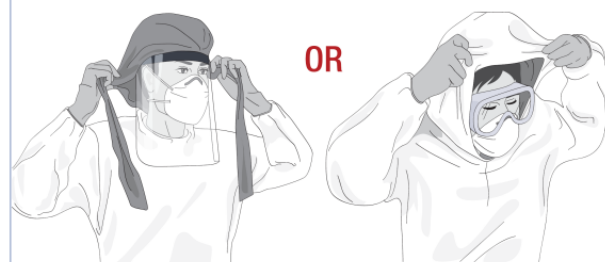
1 Always remove PPE under the **guidance and supervision of a trained observer** (colleague). Ensure that infectious waste containers are available in the doffing area for safe disposal of PPE. Separate containers should be available for reusable items.

2 Perform **hand hygiene** on gloved hands.¹

3 Remove **apron** leaning forward and taking care to avoid contaminating your hands. When removing disposable apron, tear it off at the neck and roll it down without touching the front area. Then untie the back and roll the apron forward.



5 Remove **head and neck covering** taking care to avoid contaminating your face by starting from the bottom of the hood in the back and rolling from back to front and from inside to outside, and dispose of it safely.

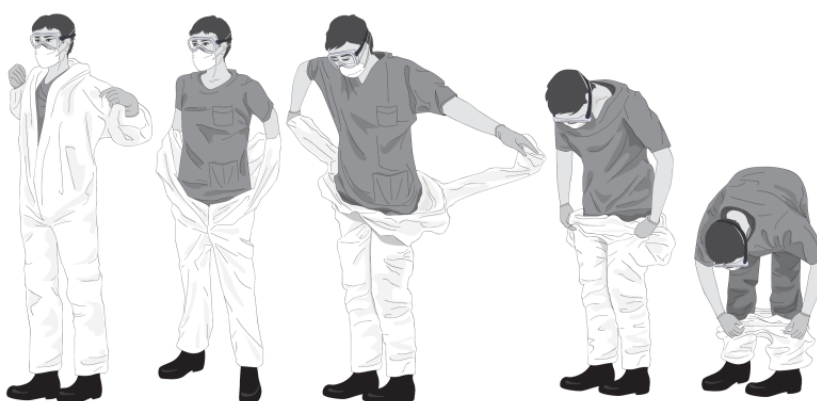


4 Perform **hand hygiene** on gloved hands.

6 Perform **hand hygiene** on gloved hands.

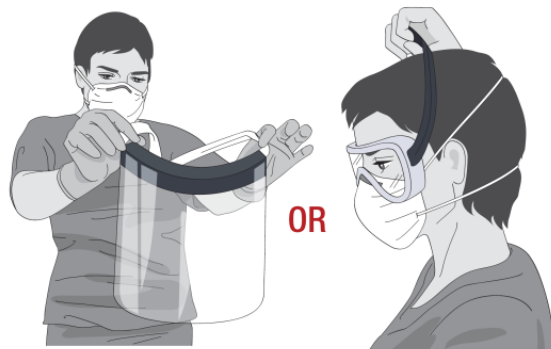
7 Remove **coverall and outer pair of gloves**:

Ideally, in front of a mirror, tilt head back to reach zipper, unzip completely without touching any skin or scrubs, and start removing coverall from top to bottom. After freeing shoulders, remove the outer gloves² while pulling the arms out of the sleeves. With inner gloves roll the coverall, from the waist down and from the inside of the coverall, down to the top of the boots. Use one boot to pull off coverall from other boot and vice versa, then step away from the coverall and dispose of it safely.



8 Perform **hand hygiene** on gloved hands.

9 Remove **eye protection** by pulling the string from behind the head and dispose of it safely.



11 Remove the **mask** from behind the head by first untying the bottom string above the head and leaving it hanging in front; and then the top string next from behind head and dispose of it safely.



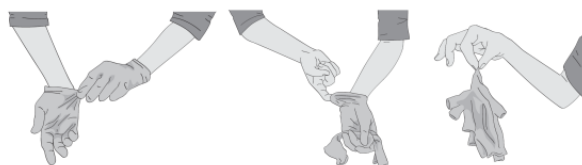
10 Perform **hand hygiene** on gloved hands.

12 Perform **hand hygiene** on gloved hands.

13 Remove rubber **boots** without touching them (or overshoes if wearing shoes). If the same boots are to be used outside of the high-risk zone, keep them on but clean and decontaminate appropriately before leaving the doffing area.³

14 Perform **hand hygiene** on gloved hands.

15 Remove **gloves** carefully with appropriate technique and dispose of them safely.



16 Perform **hand hygiene**.

¹ While working in the patient care area, outer gloves should be changed between patients and prior to exiting (change after seeing the last patient)

² This technique requires properly fitted gloves. When outer gloves are too tight or inner gloves are too loose and/or hands are sweaty, the outer gloves may need to be removed separately, after removing the apron.

³ Appropriate decontamination of boots includes stepping into a footbath with 0.5% chlorine solution (and removing dirt with toilet brush if heavily soiled with mud and/or organic materials) and then wiping all sides with 0.5% chlorine solution. At least once a day boots should be disinfected by soaking in a 0.5% chlorine solution for 30 min, then rinsed and dried.